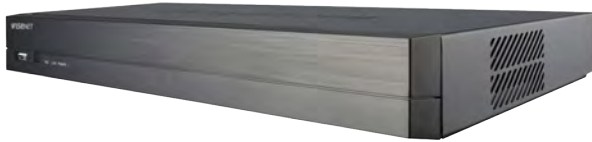


XRN-410S

4CH Network Video Recorder with PoE Switch

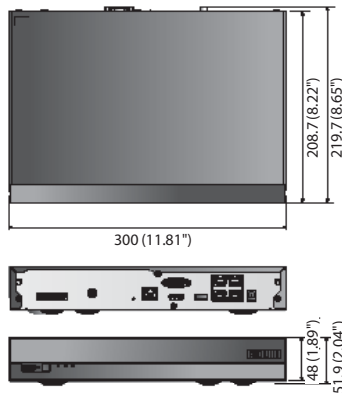


Key Features

- Up to 4CH, 8megapixel camera supported
- H.265, H.264, MJPEG codec support, WiseStream support
- 50Mbps network camera recording
- Plug & play by 4 PoE/PoE+ ports
- Max. 1HDD supported
- HDMI / VGA local monitor
- ARB supported
- P2P service(QR code connect) support

Dimensions

Unit : mm (inch)



XRN-410S		
DISPLAY		
Video	Inputs	Up to 4CH
	Resolution	CIF ~ 8MP
Live	Protocols	Samsung, ONVIF
	Local Display	HDMI / VGA
	Multi Screen Display	[Local monitor] 1 / 2V / 3V / 4 / Auto sequence [Web] 1 / 4 / Auto sequence
	Performance	[Local Monitor] 8MP (60fps), 5MP (90fps), 3MP (120fps), 2MP(240fps), 720p (240fps), D1 (240fps)
PERFORMANCE		
Operating System	Embedded	Linux
Recording	Compression	H.265, H.264, MJPEG, WiseStream (H.265, H.264)
	Recording Bandwidth	50Mbps
	Resolution	CIF ~ 8MP
	Mode	Manual, Schedule (Continuous / Event), Event (Pre / Post)
	Event Trigger	Alarm input (4), Video loss, Camera event (Sensor, MD, Video analytics, Defocus)
Search & Playback	Event Action	E-mail, PTZ preset, Alarm out, Buzzer, Monitor out
	Playback Bandwidth	32Mbps (4CH simultaneously)
	Performance	Max. 3 users (Local 1, Remote 3)
Storage	Mode	Date & Time (Calendar) / Event log list / Text search (POS, ANPR), ARB search, Smart search (Virtual Line w/ direction, Enter / Exit)
	Simultaneous Playback	Up to 4CH (Local, Network)
	Resolution	CIF ~ 8MP
Backup	Playback Control	Fast/Slow Forward/Backward, Move one step up/down
	Default Built-In	0TB ~ 6TB (Dependent on region)
	Internal	1 (Max.6TB)
Sensor	Max. Capacity	6TB
	File Backup Function	BU/EXE (USB), JPG/AVI (Web, CMS)
Audio	Input / Output	Multi channel (Up to 4CH) play, Date-time/title display
	Input	4 / 2 (NO 1ea, NO/NC 1ea)
Network	Compression	4CH (Network)
	Audio Communication	G.711, G.726, AAC (16/48KHz)
NETWORK		
Protocol Support		TCP/IP, UDP/IP, RTP (UDP), RTP (TCP), RTSP, NTP, HTTP, DHCP (Server, Client), PPPoE, SMTP, ICMP, IGMP, ARP, DNS, DDNS, uPnP, HTTPS, SNMP, ONVIF (Profile-S), SUNAPI(Server, Client)
DDNS		Hanwha security DDNS
Transmission Bandwidth		64Mbps
Max. Remote Users		Search 3 / Live unicast 10 / Live multicast 20
IP		IPv4 / IPv6
Security		IP address filtering, User access log, 802.1x authentication, Encryption (English, French, German, Italian, Spanish, Russian, Turkish, Polish, Dutch, Swedish, Czech, Portuguese, Danish, Rumanian, Serbian, Croatian, Hungarian, Greek, Norwegian, Finnish, Korean, Chinese(Simplified), Japanese, Thai)
Language	GUI / Web	
OS		Supported OS : Windows 7, 8, 10, Mac OS X 10.8, 10.9, 10.10, 10.11
Web Browser		Non-plugin Webviewer Supported Browser : Google Chrome 47, MS Edge 20 Plug-in Webviewer Supported MS Explore 11, Mozilla Firefox 43, Apple Safari 9 * Mac OS X only
Viewer Software	Type	SSM, Webviewer, SmartViewer, Wisenet mobile
FUNCTIONS	CMS Support	SDK / CGI (SUNAPI)
Camera Setup	Register	PnP mode, Manual mode
	Setup Items	IP address, Add profile edit, Bitrate, Compression, GOP, Quality, Camera MD setup, Camera video setup (Simple focus, Brightness / Contrast, Flip / Mirror, IRIS, WDR, D&N, SSSNR, Shutter, SSSD, DIS), Fisheye dewarping (Web), Hallway view setup, Camera webpage
Camera Control	PoE	Monitor PoE power consumption, On/Off control for each PoE camera, Remote reset for each PoE camera
Easy Configuration		Setup wizard (Date/Time, Network, Auto camera configuration), P2P (QR code)
Redundancy	ARB	Yes
Smart Phone	PTZ	Control / Preset Via GUI, Webviewer, 255 presets
	OS	Android, iOS
	Protocol Support	RTP, RTSP, HTTP, CGI (SUNAPI)
System Control	Control	Live (4CH) : Multi-profile support, Playback (1CH), Event push
	Max. Remote Users	Search 3 / Live unicast 10 / Live multicast 20
INDICATOR / INTERFACE		
Front	Indicator	LED (Status indicator) : 3ea Power status 1, LAN 1, Record 1
	VGA	1ea
	HDMI	1ea - Support up to 4K (3840 x 2160)
Connections	Audio	Out 1ea (RCA, Line)
	Ethernet	4ea (PoE/PoE+, 100Mbps), 1ea (WAN, 1Gbps) - WAN : Uplink to CMS
	Alarm	In 4ea (Terminal block) / Out 2ea (Terminal block)
	USB	2ea (Front 1, Rear 1)
	Reset	Switch (1ea)
	Power Cord	Included
SYSTEM		
Log	Log List	Max. 20,000 (System log, Event log each)
GENERAL		
Electrical	Input Voltage / Current	54V DC / 1.67A
	Power Consumption / PoE Budget	MAX.13W(109BTU), 2TB HDD x 1ea) / Max. 50W
Environmental	Operating Temperature	+0°C ~ +40°C (+32°F ~ +104°F)
	Operating Humidity	20% ~ 85% RH
Mechanical	Color / Material	Black / Metal
	Dimensions (WxHxD)	300.0 x 48.0 x 208.7mm (17.32" x 1.89" x 8.22") (1U)
	Weight	1.69Kg (3.73 lb) (2TB HDD)

* The latest product information / specification can be found at hanwha-security.com
* Design and specifications are subject to change without notice.